

Installation instructions for toothed belt cover, new version made of 1 mm sheet steel

Foreword

In many, the old plastic covers are cracked and faulty due to missing fixings and age.

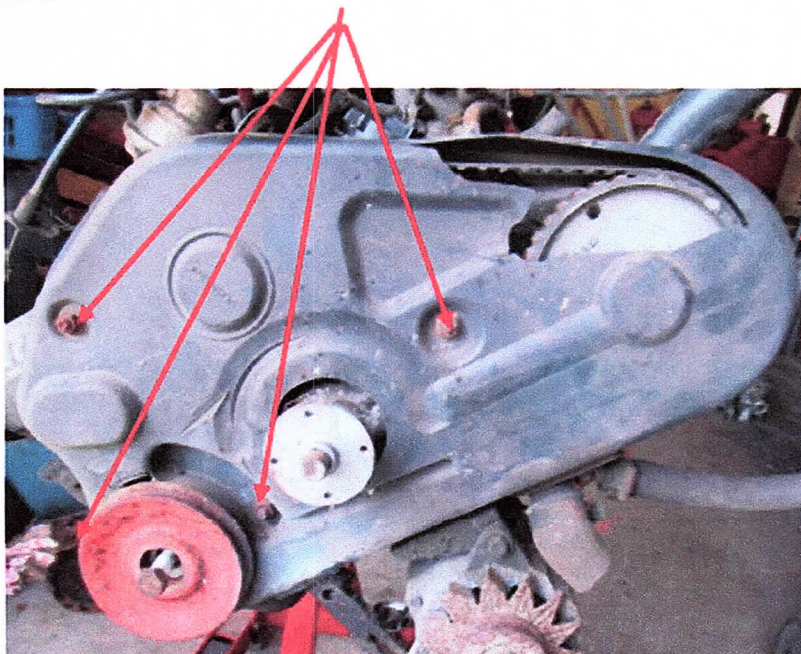
That is why Bedfordteile Schüttemeyer has remade the covers from sheet steel and also installed some improvements.

Scope of delivery:

1. Cover
2. 1 stud bolt 31,5mm one side hole M8 other side stud bolt 5/16 x 18 ; 20mm long
3. 1 stud bolt 52mm one side hole M8 other side stud bolt 5/16 x 18 ; 10mm long
4. 1 stud bolt 70 mm both sides hole M8
5. 3 pan-head screws 8 x 15
6. 7 Toothed pulleys
7. 1 Allen screw M8 x 30
8. 1 M5 x 12 screw
9. 1 U-washer 5 x 20 mm
10. 1 Mounting bracket
11. Installation instructions

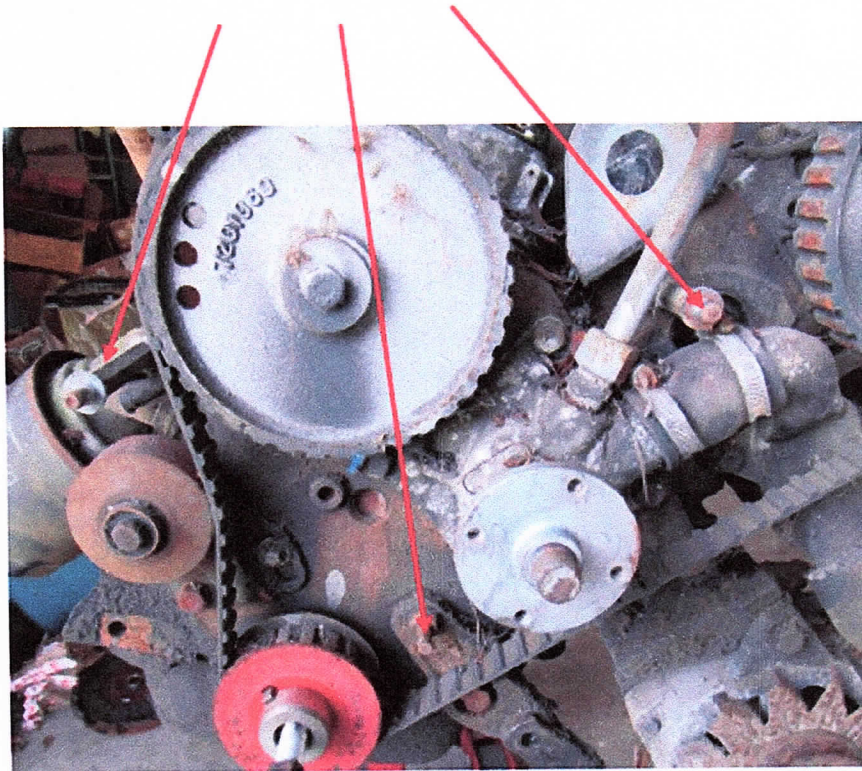
Removal of the old cover:

Remove the fan blade, pull the belt pulley off the crankshaft, unscrew all retaining screws.

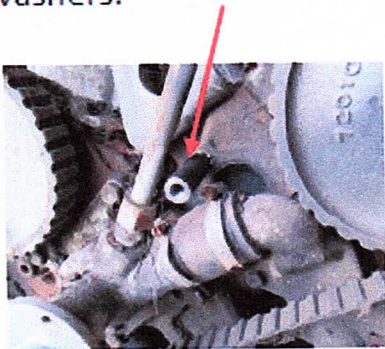


Unscrew the lug behind here, if still present.

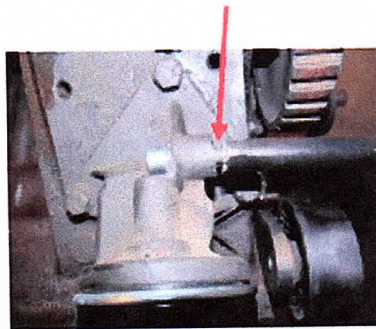
Unscrew the stud bolts using an 11mm spanner.



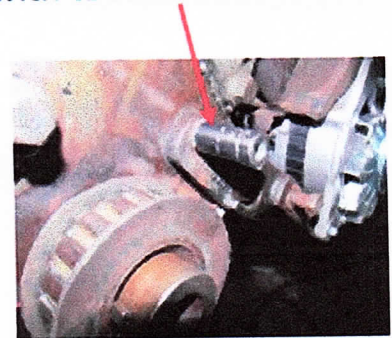
Above the water pump, screw in the new stud bolt with a length of 52 mm with toothed lock washers.



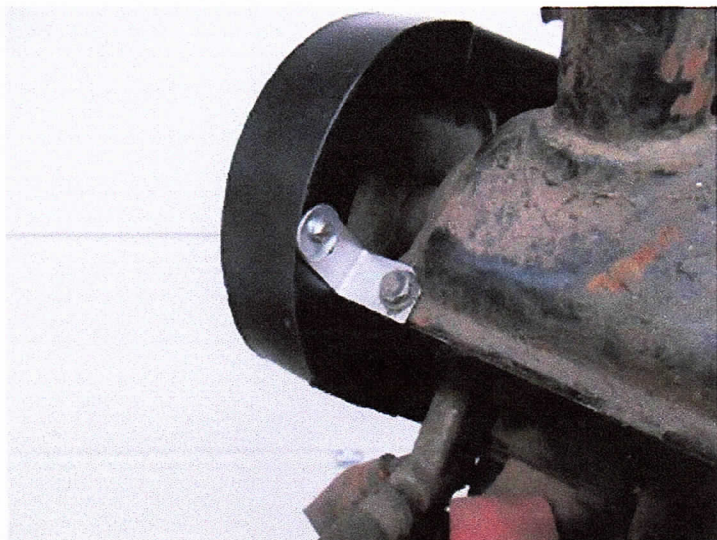
Above the oil filter, screw in the new 70 mm long stud bolt with 2 toothed lock washers and the 8 x 30 screw.



Above the crankshaft, screw in the new stud bolt with a length of 31.5 mm with toothed lock washer.



Tighten all stud bolts firmly with the water pump pliers. Now put on the new cover and screw it on with the pan-head screws and toothed lock washers.

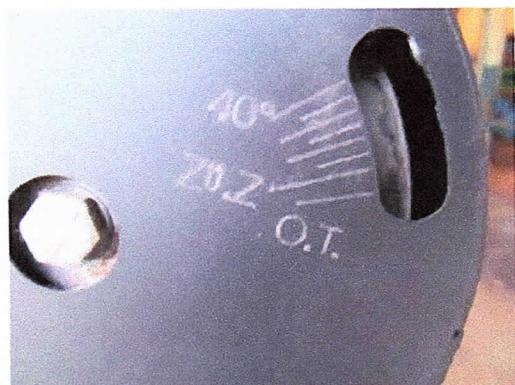


Screw the sheet metal angle on the back with the M 5 screw and the washer.

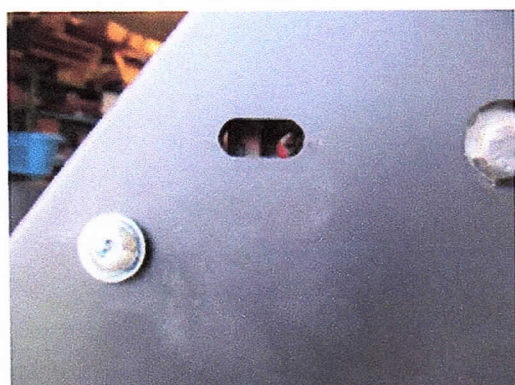
The following markings are new



On the crankshaft pulley you can now also see how far the ignition runs at medium speed in the early direction. If everything is working properly, this should be at least 35 degrees at approx. 2500 rpm, if not, correct the vacuum adjustment or the centrifugal force adjustment in the distributor.



The same values can now also be at the top of the camshaft. It is helpful to colour-code the small hole in the camshaft sprocket with an ink pen.



The sideshaft sprocket now also has a window so that the timing belt position can be checked at any time without having to remove the cover.